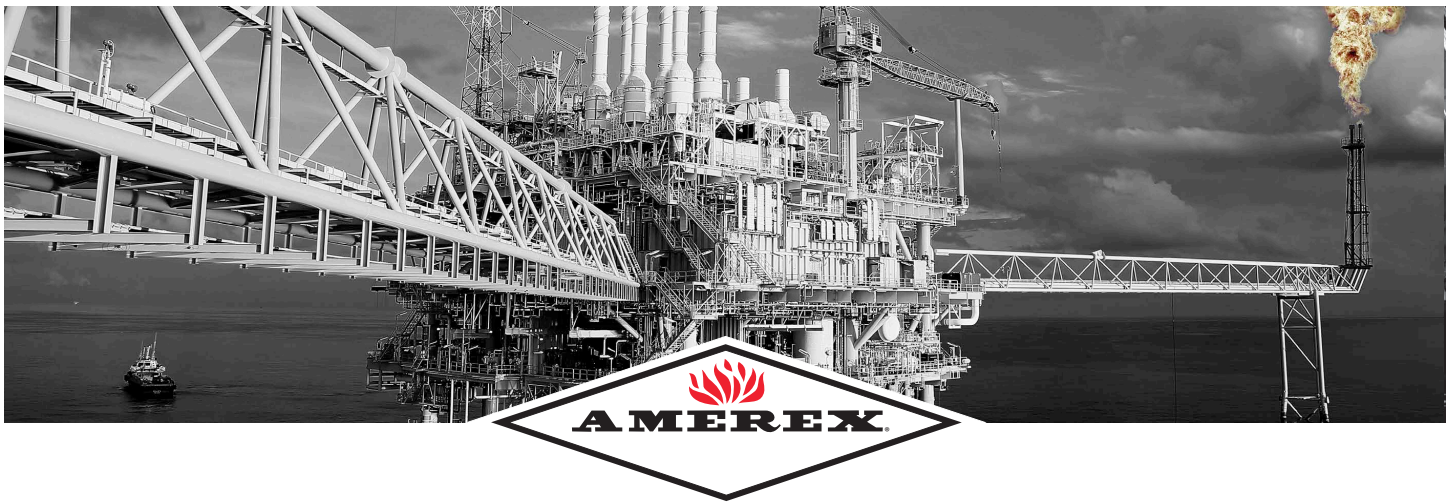



Z-SERIES **HIGH-PERFORMANCE EXTINGUISHERS**



Quality is Behind the Diamond[®]



The **AMEREX Z-Series** line of high performance extinguishers bring even more performance, reliability, and value to corrosive environments.

 The top choice of oil and gas professionals for more than two decades, **High-Performance** extinguishers from Amerex combine legendary knock-down power with an outstanding life span and an overall lower cost than anything else currently available. Thanks to our zinc-enriched proprietary coating, Amerex High-Performance models also boast an **industry-leading 12-year warranty against corrosion.**



Compliance Flow

Longer life, lower cost and the best warranty in the industry—
that's quality behind the diamond.

THE EXCLUSIVE Z-SERIES FROM AMEREX.

AMEREX Z-Series fire extinguishers are designed to protect life and property against fire hazards in corrosive environments.

The most extreme workplaces in the world are getting a proven extinguisher that withstands the toughest conditions. The Z-Series goes head to head with environments containing corrosive chemicals, gases, or salt air or water, providing unmatched resistance to damage, providing unmatched resistance to damage, distress and wear. The innovative zinc-based primer created by the Amerex research and development team makes this product a rugged solution for longstanding durability problems in harsh environments globally. We invested in substantial research, testing and verification to make sure the Z-Series extinguishers could stand up to 12 years in a severely corrosive environment.

UL verification is an objective, science-based assessment that confirms the accuracy of marketing claims. Each unit features the UL Verified Mark. The Z-Series product line has been verified by UL to withstand 12 years of simulated severe corrosion.

**Resists 12 years
of simulated
severe corrosion
in a salt-
contaminated
environment.**



Fast Flow

A black and white photograph of a large offshore oil platform. The platform is a complex structure with multiple levels, stairs, railings, and various pieces of equipment. A large crane is visible on one of the upper levels. The platform is situated in the middle of the ocean, with waves visible in the foreground. The sky is overcast.

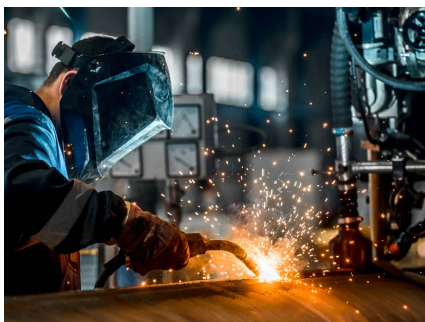
Z-SERIES

FEATURES & BENEFITS

- 12-year warranty
- Highest achievable UL ratings
- Proprietary corrosion-resistant paint process
- Severe corrosion tested in accordance with ISO 21207
- Choice of ABC or Purple K dry chemicals
- Simple maintenance requiring fewer replaceable parts and steps than cartridge operated models
- Only UL Verified corrosion-resistant extinguisher on the market
- Compliance Flow and Fast Flow discharge available
- Improved environmental impact compared to galvanized units
- Easy to operate

Z-SERIES APPLICATIONS

The AMEREX Z-Series is ideal for sites where heavy industrial, manufacturing, mining, processing facilities, anywhere chemical- or corrosive-intensive work occurs or where there is an elevated fire risk.



Our customers put Amerex to the test every day in the world's most extreme work environments.

- Oil and gas platforms
- Oil refineries
- Mining operations
- Agriculture
- Coastal and marine environments
- Industrial climates
- Waste management processes

HIGH-PERFORMANCE EXTINGUISHERS

Z-Series High-Performance
stored-pressure extinguishers
combine Amerex's
state-of-the-art corrosion
resistance with one of our
best-selling products.

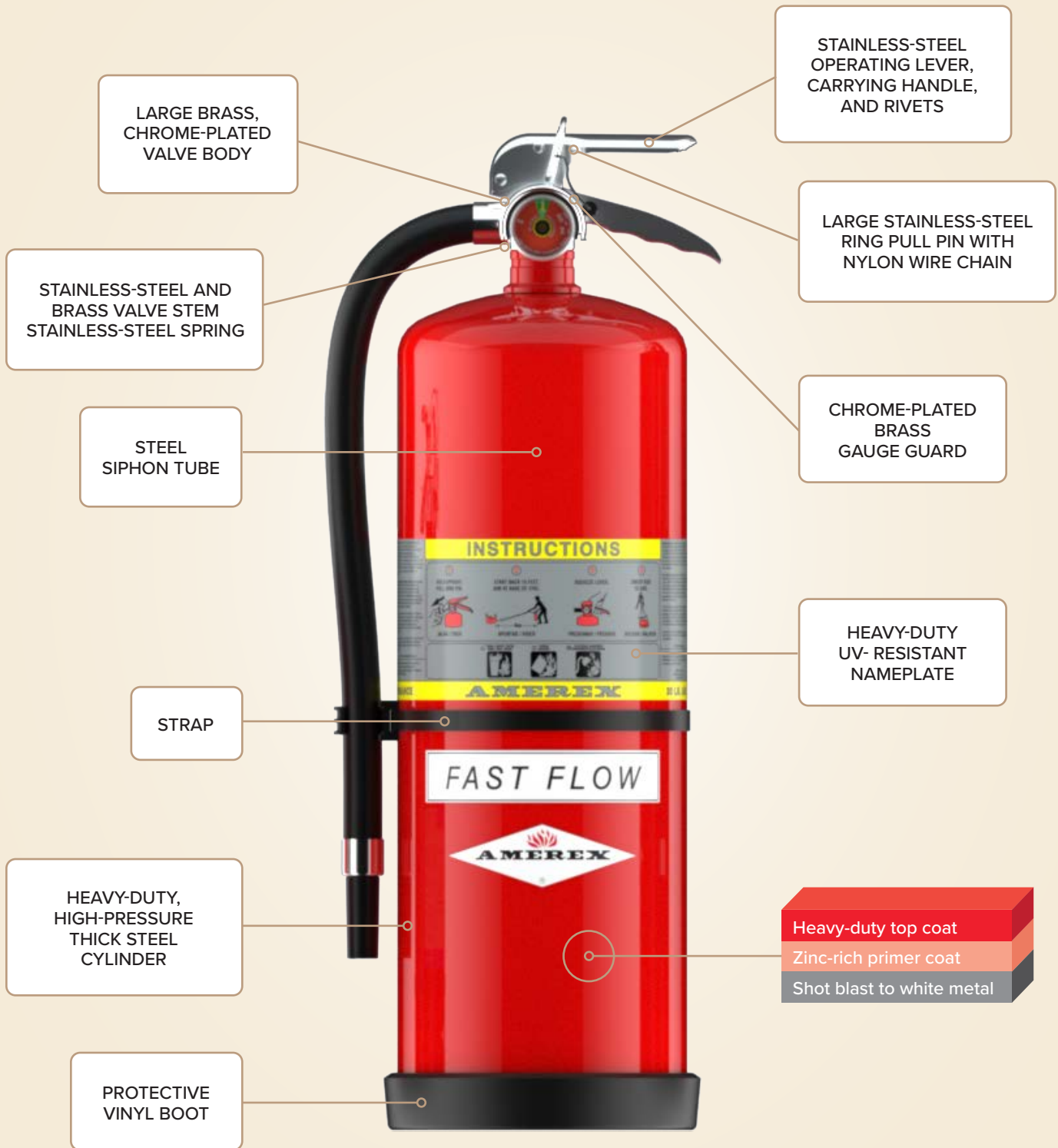
Available in both **FAST FLOW** and **COMPLIANCE FLOW** models, the Z-series High-Performance extinguisher offers superior fire protection and reliability in the most challenging situations. Featuring our exclusive Amerex paint process, fewer moving parts, and simple design, these extinguishers provide the ultimate in corrosion resistance, plus minimal repair and maintenance costs over time.

BENEFITS OF STORED-PRESSURE EXTINGUISHERS

Extremely low maintenance costs make stored-pressure extinguishers an ideal choice for extended use in harsh surroundings. Stored-pressure extinguishers mean no separate nitrogen cylinder or regulator to test, no chemical contamination, no moisture seals or high-pressure hoses to replace or inspect, and fewer parts requiring replacement over time. With low maintenance costs, affordable price points, high reliability and general ease of use, stored-pressure extinguishers are an ideal choice for extended use in harsh surroundings.



ANATOMY OF AN AMEREX **Z-SERIES** EXTINGUISHER



Each Z-Series product is backed by our **12-year manufacturer warranty**—the best available in the industry.

Z-SERIES

COMPLIANCE FLOW

The Amerex Compliance Flow extinguisher has a higher UL rating, extended discharge times, and lower flow rate, allowing it to meet or exceed a diverse array of code requirements. Available with ABC or Purple K dry chemicals, compliance flow models discharge at a rate that meets UL discharge time requirements, with the same initial range and package dimensions. If meeting code requirements in a harsh industrial setting is a priority, Compliance Flow models are likely the best choice for you.



COMPLIANCE FLOW SPECIFICATIONS								
	ABC Dry Chemical					Purple K Dry Chemical		
MODEL NUMBER	711	713	714	715	712	716	717	718
UL & ULC RATING	4A:80B:C	4A:80B:C	10A:120B:C	10A:160B:C	80B:C	80B:C	120B:C	160B:C
CAPACITY (LBS / KG)	10 / 4.5	13.2 / 6	20 / 9	30 / 13.6	10 / 4.5	13.2 / 6	20 / 9	30 / 13.6
SHIPPING WEIGHT (LBS / KG)	19.5 / 8.8	31 / 14.1	43 / 19.5	58 / 26.3	19.5 / 8.8	31 / 14.1	43 / 19.5	58 / 26.3
HEIGHT (IN / CM)	20.5 / 52.1	17.5 / 44.5	24.75 / 62.9	26.5 / 67.3	20.5 / 52.1	17.5 / 44.5	24.75 / 62.9	26.5 / 67.3
WIDTH (IN / CM)	8.25 / 21	10.5 / 26.7	10.5 / 26.7	11 / 27.9	8.25 / 21	10.5 / 26.7	10.5 / 26.7	11 / 27.9
DEPTH (IN / CM)	5 / 12.7	7 / 17.8	7 / 17.8	8 / 20.3	5 / 12.7	7 / 17.8	7 / 17.8	8 / 20.3
RANGE (INITIAL — FT)	15-21	40-50			15-21	40-50		
DISCHARGE TIME (SECONDS)	22	22	30	34	22	22	29	34
AVG DISCHARGE RATE (LBS / SEC)	.5	.59	.65	.95	0.45	.61	.67	.81
INCLUDED BRACKET	Wall				Wall			



Z-SERIES FAST FLOW

Fast Flow models discharge at high flow rates, delivering more pounds of chemicals per second to supply the safest and fastest three-dimensional “knock down” capability. Ideal for high-risk areas, Fast Flow models discharge faster than their Compliance Flow counterparts and offer impressive results in the face of fast-moving fires.

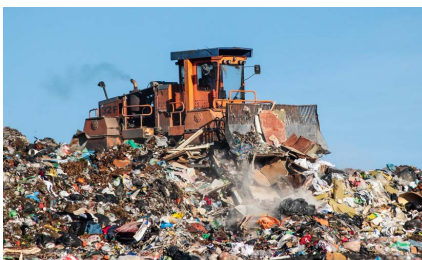
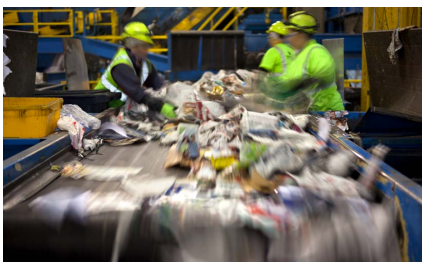


FAST FLOW SPECIFICATIONS							
	ABC Dry Chemical			Purple K Dry Chemical			
MODEL NUMBER	790	791	792	793	794	795	796
UL & ULC RATING	2A:40B:C	4A:40B:C	4A:40B:C	40B:C	40B:C	20B:C	40B:C
CAPACITY (LBS / KG)	13.2 / 6	20 / 9	30 / 13.6	13.2 / 6	20 / 9	20 / 9	30 / 13.6
SHIPPING WEIGHT (LBS / KG)	31 / 14.1	43 / 19.5	58 / 26.3	31 / 14.1	43 / 19.5	43 / 19.5	58 / 26.3
HEIGHT (IN / CM)	17.5 / 44.5	24.75 / 62.9	26.5 / 67.3	17.5 / 44.5	24.75 / 62.9	24.75 / 62.9	26.5 / 67.3
WIDTH (IN / CM)	10.5 / 26.7	10.5 / 26.7	11 / 27.9	10.5 / 26.7	10.5 / 26.7	10.5 / 26.7	11 / 27.9
DEPTH (IN / CM)	7 / 17.8	7 / 17.8	8 / 20.3	7 / 17.8	7 / 17.8	7 / 17.8	8 / 20.3
RANGE (INITIAL — FT)	40–50			40–50			
DISCHARGE TIME (SECONDS)	15	18	21	15	15	10	16
AVG DISCHARGE RATE (LBS / SEC)	.94	1.20	1.60	.94	1.44	2.00	1.88
INCLUDED BRACKET	Wall			Wall			

HIGH-PERFORMANCE **Z-SERIES** WHEELED EXTINGUISHERS

Just like our hand-held units, **Z-Series High-Performance wheeled extinguishers** offer superior reliability, corrosion resistance, and affordable maintenance costs.

Amerex wheeled extinguishers have exceptional range and flow rate, making them ideal for use with combined agent attacks to extinguish escape points of flammable liquids under pressure. Our wheeled units meet test standards CAN/ULC S504 and S508, plus ANSI/UL 299 and 711. Each unit can be equipped with 36" x 6" wheels with non-sparking rubber treads.



WHEELED FEATURES & BENEFITS

- Proprietary corrosion-resistant paint process
- Integral lift loops for loading/positioning on board.
- Carriage design rests the agent cylinder and hose above ground for protection.
- Chrome-plated brass shut-off ball valve with swivel pistol grip outperforms aluminum.
- Separate 3" fill port with chrome-plated brass cap.
- 1" x 50' field-repairable hose constructed with MIL-SPEC brass couplings.
- Full fill regardless of the type of chemical used—no "nominal" fill sizes.
- Large, easy-to-read pressure gauge with stainless-steel gauge guard.
- Wide-footprint wheels at 36" x 6" for easy movement of unit.



Each Z-Series
Product is Backed by Our

12-YEAR MANUFACTURER WARRANTY

—the Best Available in
the Industry.



125 lb



250 lb

WHEELED EXTINGUISHER SPECIFICATIONS

	ABC Dry Chemical	Purple K Dry Chemical	
MODEL NUMBER	756	758	759
UL & ULC RATING	40A:160B:C	160B:C	120B:C
CAPACITY (LBS / KG)	250 / 113.4		125 / 56.7
SHIPPING WEIGHT (LBS / KG)	775 / 351.3		—
HEIGHT (IN / CM)	60 / 152.4		53.5 / 135.9
WIDTH (IN / CM)	37 / 93.98		34 / 86.4
DEPTH (IN / CM)	44 / 111.76		38.5 / 97.8
DISCHARGE TIME (SECONDS)	50	38	30
DISCHARGE RANGE (FT / M)	60–80 / 18.19–24.26		50–55 / 15.24–16.76
OPERATING TEMP. (F / C)	-40° to +120° / -40° to +49°		
HOSE LENGTH (FT / M)	50 / 15.24		
HOSE DIAMETER (IN / CM)	1 / 2.54		
WHEELS [STEEL] (IN / CM)	36 x 6 / 91.44 x 15.24		
USCG APPROVED	Yes		

why AMEREX?

QUALITY

Amerex didn't become a global market leader overnight. Our business has grown year after year based on our products' reputation for performance and durability in even the most rugged environments.

INNOVATION

Because Amerex is independently owned and forward thinking, we are continuously innovating and investing for the benefit of our customers and those they serve.

SERVICE

Amerex was founded on a mutual appreciation for premium quality in products and customer service and the importance of interpersonal relations.



Quality is Behind the Diamond®

7595 Gadsden Hwy.
P.O. Box 81
Trussville, AL 35173
Ph (205) 655-3271



Amerex Corporation



amerex_corporation



@Amerex_Corp



Amerex Corporation



Amerex

www.amerex-fire.com
customer.service@amerex-fire.com
intl.sales@amerex-fire.com